

# Annual Conference Programme 2023



RCP London Events/Rupa Photography

**Thursday  
15 June**

Royal College of Physicians  
11 St Andrews Place  
Regent's Park  
London NW1 4LE

Thanks to



Main sponsor



## We are GIDE.

We believe in data. We are expert in their collection. Our mission is to use all of our means to reach all of your sources. We are also expert in their processing. Our systems are designed to ensure the ongoing integrity and security of your data.

For nearly 30 years we've worked with governments and some of the world's largest social and market research organisations. We've delivered tens of thousands of large and small scale data collection and reporting projects on their behalf. Our tools and teams are second to none.

Our web-based collection platform is built around a set of common data descriptions so that we can deploy CAPI, CATI and CAWI – in whatever combination – to ensure we capture every data point while building a unified dataset to facilitate their analysis. Our integrated suite of administrative tools maximise a collection's organisation and workflow to make sure you get to the very heart of your enquiry.

Built on exactly the same principles, our most recent development is [CAVIsio](#). Designed to leverage the ever-increasing move towards video conferencing, CAVIsio brings together – in a single browser window – the video streams of the interviewer, the respondent and the questionnaire.

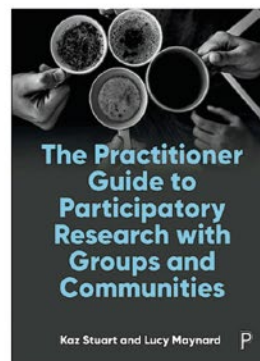
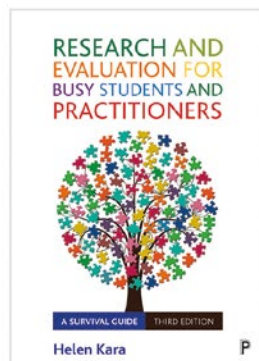
No source is left behind.

We are GIDE. Data is what we do.

[www.gide.net](http://www.gide.net)



## Visit Policy Press to discover our new and forthcoming titles and get 50% off books until end of June



To redeem your discount, use code CONF23 at the checkout at:  
[policy.bristoluniversitypress.co.uk/social-research-methods](http://policy.bristoluniversitypress.co.uk/social-research-methods)

**P Policy Press**  
PUBLISHING WITH A PURPOSE

# Welcome to the 2023 Annual Conference

A huge welcome to the 2023 Social Research Association Conference. We're incredibly excited to be able to meet up in person for the first time since 2019, at our new home at the Royal College of Physicians.

This year's conference provides the cutting-edge insight into the world of social research that you've come to expect from the SRA. You can listen to four sector-leading experts in our plenary sessions, giving you the chance to hear more about topics ranging from evaluation and decolonising research to communicating complexity and ChatGPT. You can choose from ten breakout sessions examining issues such as innovation, co-creation, and peer research. We're particularly delighted to have a session focussed solely on early careers researchers. A "Please Do Touch" exhibition provides creative interpretations of research process and findings.

There will be plenty of breaks throughout the day, and we hope you will take the opportunity to speak to our exhibitors, catch up with old friends and make new connections. If you're not having to immediately dash off when conference ends for some late-night coding or focus groups (and why would you?), please come along and have a relaxing drink at our post-event reception.

Legendary American football coach Vince Lombardi once said that the only place where success comes before work is in the dictionary. With that in mind, we'd like to thank the huge number of people whose hard work has made this conference a success.

An immense amount of work goes into organising and running a conference, and we do not take it for granted. We'd particularly like to thank:



- ▶ Our plenary speakers and Isabella Pereira, our conference chair, for sharing their knowledge and experience
- ▶ Our breakout session speakers, for providing tailored insights
- ▶ The SRA events group for developing the conference, in particular overseeing the move back to a face-to-face conference
- ▶ Jen Jones for devising and running the 'Please do touch' exhibition
- ▶ The incredibly hard work of the SRA staff, who continue to punch well above their weight, in particular Monica Wright, Tom Yeadon and Graham Farrant
- ▶ Our main sponsor, GIDE, and our other sponsors and exhibitors, CLOSER, EBSCO, MAXQDA, The National Centre for Research Methods (NCRM), and Quirkos

**Ailbhe McNabola and Diarmid Campbell-Jack,**  
Co-Chairs, SRA

Thanks to our Sponsors and exhibitors for supporting this conference

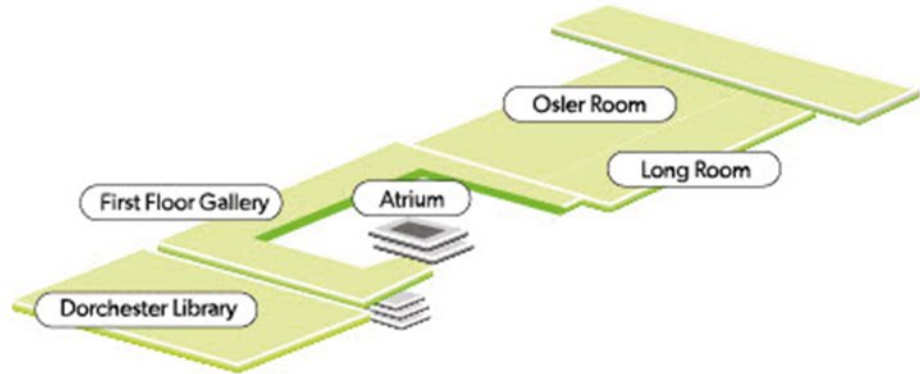


Please visit the stands in the Osler & Long Room during the breaks

# Venue floor plan

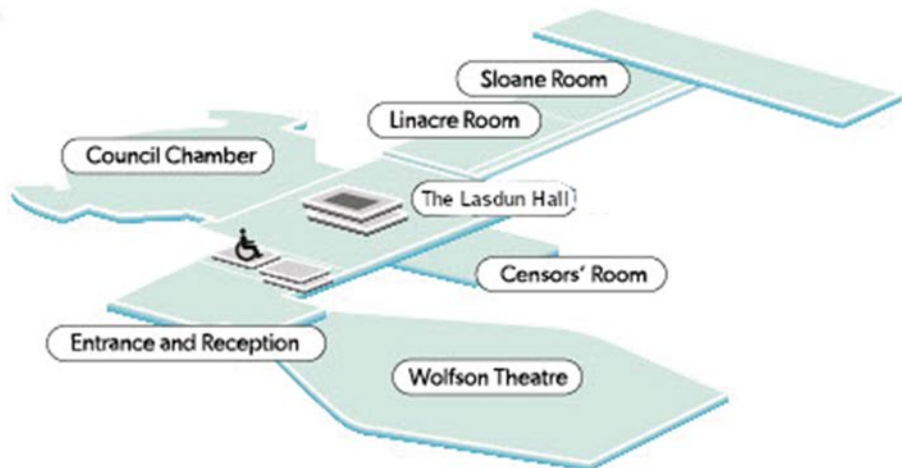
## First Floor

Dorchester Library  
 Gallery  
 Long Room  
 Osler Room



## Ground Floor

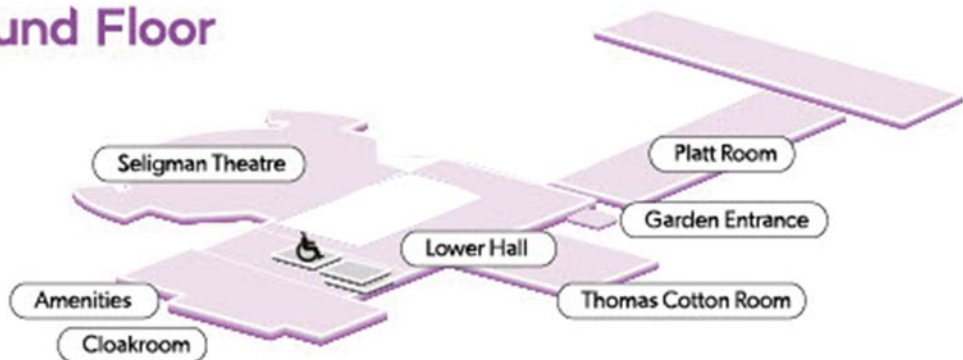
Council Chamber  
 Censors' Room  
 Linacre Room  
 Sloane Room  
 Entrance & Reception  
 The Lasdun Hall



## Lower Ground Floor

Amenities  
 Lower Hall  
 Platt Room  
 Seligman Theatre

**Amenities**  
 Cloakroom  
 Lap-top ComPoint  
 Wi-Fi  
 Accessible Entrance  
 Toilets including accessible facilities



# Programme

Wifi: Network name: **SRA**  
Password: **Research**

## Wolfson Theatre for all Main Speaker sessions

Osler & Long Room for all tea /coffee breaks and lunch.

Please visit our exhibitors and the 'Please do touch' research exhibition.

- 9.00 – 10.00am** Registration (Tea/coffee/pastries) Platt Room /Garden
- 10.00 – 10.05am** SRA Chair's welcome – Ailbhe McNabola and Diarmid Campbell-Jack
- 10.05 – 10.10am** Conference Chair welcome – Isabella Pereira
- 10.10 – 10.50am** MAIN SPEAKER: **Catherine Hutchinson** – Head of UK Government Evaluation Task Force, in conversation with Martina Vojtkova, National Centre for Social Research
- 10.50 – 11.30am** MAIN SPEAKER: **Professor Heidi Safia Mirza**, UCL and Goldsmiths – *Decolonising Research: Rethinking Race, gender and intersectional approaches to research*
- 11.30 – 12.00am** TEA/COFFEE BREAK (Osler & Long Room)
- 12.00 – 1.00pm** BREAKOUTS AM (see page 8 for details)
- ▶ Innovation for all (Council Chamber)
  - ▶ How co-creation leads to solutions (Seligman Theatre)
  - ▶ Measure twice, estimate once (Linacre & Sloane)
  - ▶ Masterclass – Sensitive topics and vulnerable participants (Dorchester Library)
  - ▶ Early career researchers session (Platt)
- 1.00 – 2.00pm** LUNCH: (Osler & Long Room)
- 2.00 – 2.40pm** MAIN SPEAKER: **Ralph Scott**, University of Manchester – *Does ChatGPT Know What the Most Important Issue is? Using Large Language Models to Code Open-Text Social Survey Responses at Scale*
- 2.40 – 3.20pm** MAIN SPEAKER: **Robert Cuffe**, Head of Statistics at BBC News – *Clearly communicating complexity – can it be done?' Stats and research findings are everywhere, but how well are they conveyed, and how can researchers bring accuracy to brevity?*
- 3.20 – 4.00pm** TEA/COFFEE BREAK (Osler & Long Room)
- 4.00 – 5.00pm** BREAKOUTS PM (see page 9 for details)
- ▶ Making the most of peer researchers (Council Chamber)
  - ▶ Researchers in residence (Platt)
  - ▶ Simplifying evaluation for complex problems (Wolfson Theatre)
  - ▶ Inclusive research from the start (Seligman Theatre)
  - ▶ Masterclass – An Infographic 101 (Linacre & Sloane)
- 5.00 – 6.00pm** END: Drinks reception – RCP Garden

# IMPORTANT

- ▶ The Main Speaker sessions will be recorded, and we will let attendees know when these are available after the conference
- ▶ We will be using SLIDO for the main speaker Q&As – details will be on the Wolfson Theatre screen.
- ▶ WIFI: Network name: SRA, Password: Research
- ▶ Please Note – the AM Breakout Masterclass with Nicole Brown is full – please don't attend if you haven't registered for this.
- ▶ Quiet Room – The Thomas Cotton room is available (Lower ground floor)
- ▶ The RCP Medicinal Garden – please feel free enjoy the garden throughout the day (weather permitting!) Access is via the Lower ground floor.



## Apply now to NIHR's new funding calls for research into drug use and addiction

### i4i Addiction Mission: Innovation for Treatment and Recovery Award

Stage 1 Deadline : 12 July 2023

---

### Innovation Fund to Reduce Demand for Illicit Substances

Stage 1 Deadline : 19 July 2023

---

[bit.ly/NIHR\\_Drugs](https://bit.ly/NIHR_Drugs)

# About the Main Speakers

**Catherine Hutchinson** is the Head of the joint HM Treasury and Cabinet Office's Evaluation Task Force and has a wealth of experience both of evaluation and of leading improvement and change, gained in a range of senior roles.



Catherine is also currently the Chief Social Researcher in the Cabinet Office, Number 10 and HM Treasury. She has worked as Head of Profession for Evaluation at the Foreign, Commonwealth & Development Office, and as the Head of the Evaluation unit at the Department for International Development, and before that in a number of evaluation roles at the College of Policing (a What Works centre for crime reduction), Department for Education, and HM Inspectorate of Prisons.

**Heidi Safia Mirza** is Emeritus Professor of Equality Studies in Education at UCL Institute of Education and Visiting Professor of Race, Faith and Culture at Goldsmith's College and Race Policy at LSE. She is known for her pioneering intersectional research on race, gender and identity in education and has an international reputation for championing equality and human rights for Black, Muslim, Asian women, and young people through educational reform. A daughter of the Windrush generation from Trinidad and schooled in Brixton, Heidi is one of the first and rare 35 'Phenomenal Women' Black Women professors in Britain. She is author of several best-selling books including 'Black British Feminism' and 'Young Female and Black', which was voted in the top 40 most influential educational studies in Britain. Professor Mirza is a leading voice in the global debate on decolonisation and co-edited the flagship book, 'Dismantling Race in Higher Education: Racism, whiteness and decolonising the academy'. She currently leads the IFS Deaton Race and Ethnic Inequalities Review which includes the impact of COVID-19 on Black and minority ethnic communities.



**Dr Ralph Scott** is a Research Associate on the British Election Study at the University of Manchester, and a WISERD Postdoctoral Fellow at Cardiff University. He recently completed his PhD in Politics at the University of Manchester, in which he estimated the effect of attending university on political values, through analysis of longitudinal data. Prior to his doctoral studies, he pursued a career in research and policy, including roles at Teach First, The Challenge and at the think-tank Demos.



**Robert Cuffe** is the Head of Statistics for BBC News. Before that he worked on HIV drug trials at GlaxoSmithKline and is head of statistics at ViiV Health Care. Robert is a statistical ambassador for the Royal Statistical Society and was chairman of the UK pharmaceutical statistician's industry body PSI where he worked with the Science Media Centre to set up a briefing service for the Lay Science Press. His research interests deal primarily with health statistics and the general communication of statistics as a whole.



## Conference Chair

**Isabella Pereira** is Head of Qualitative Methodology in Ipsos's Qualitative Research and Engagement Centre, leading large-scale, complex qualitative and mixed methods research studies for government departments, think-tanks and charities. Isabella was an SRA trustee from 2017 to 2023.



# Breakouts // AM

## Innovation for all: behavioural responses to new tech (Council Chamber)

**Innovation takes the wheel: the value of using novel approaches to explore views of novel technology**

**Clare Palmer, Thinks Insight and Strategy and Rebecca Posner, Centre for Connected and Autonomous Vehicles**

How can researchers accurately explore public needs for new technologies like self-driving vehicles when the public find these new concepts intangible? We used numerous innovative approaches to bring this technology to life and deliver impactful research – including incorporating vehicle trials into deliberative workshops and teaming with academics on the first field-trial of EEG technology to understand emotions in real time.

**Reflections and learnings from a Participatory Action Research approach**

**Elizabeth Vourdas and Michael Kattirtzi, Ofgem and Nasrat Tania, Toynbee Hall**

This presentation focuses on Ofgem's experience of a participatory action research (PAR) project on enabling a fair transition to net zero. We share our reflections on the process of PAR, its unique role in connecting communities to decision-makers and how it differs from other research we conduct. We also discuss practical challenges and considerations when adopting a PAR approach.

## How co-creation leads to solutions (Seligman Theatre)

**Experiences of the cost of living in London**

**Kirstie Hewlett and Zara Regan, King's College London**

Drawing on an exploratory, mixed methods study on the lived experience of the rising cost of living among residents in Lambeth, Southwark and Westminster, this presentation will explore some of the practical challenges and sensitivities of co-producing research and policy solutions in hard times. The presentation features four vignettes of methodological learnings, focused on behaviours, relationships, emotions and managing complexity.

**Insights into the development of London's Wellbeing and Sustainability Measure**

**Yamini Cinamon Nair, Greater London Authority**

The GLA has developed a London Wellbeing and Sustainability Measure to help measure London as a place to live and work. We conducted asynchronous online qualitative research with Londoners to help inform the development of the Measure. This presentation will cover the key learnings and how this methodology can be used to explore complex topics in depth.

## Measure twice, estimate once (Linacre & Sloane)

**Measuring the say-do gap: using passive data to accurately capture online news habits**

**Steven Ginnis, Ipsos UK and Joseph Oxlade, Ofcom**

The news market in the UK has changed rapidly. Ipsos and Ofcom took a novel approach to mapping online news behaviour and consumer outcomes, combining passive online measurement, survey research and digital ethnography to provide insight into the true use of online news. The findings demonstrate the need to challenge claimed respondent behaviour and the limitations.

## Developing short-term demand scenarios using omnibus surveys

**Rachel Pinto and Lexi Keegan, Department for Transport**

During 2021, there was a pressing need for a range of stakeholders to have reliable short-term passenger demand estimates for international travel. DfT researchers collaborated with other analysts to apply social research to develop short-term demand scenarios. This approach had never been undertaken before and this presentation details how research was successfully used, and some of the challenges faced from this innovative approach.

## Masterclass: Sensitive topics and vulnerable participants in qualitative research (Dorchester Library)

**(There are limited places so if you selected to attend this session your badge will have a red sticker)**

**Dr Nicole Brown, Director of Social Research & Practice and Education Ltd. and Associate Professor at University College London**

Sensitive topics and/or vulnerable participants are often defined as high risk. Consequently, researchers are advised to be extra cautious but there is often little practical guidance available. The aim of this masterclass is to provide delegates with an overview of ethical, methodological, and practical considerations.

Based on tried-and-tested approaches, this session enables delegates to experiment with different forms and formats to collecting data. We will begin with a consideration of what constitutes sensitive topics and how we define vulnerable participants. We will then explore the use of LEGO® in such contexts. We will conclude the session with a plenary discussion of challenges and potential solutions when undertaking research on sensitive topics and/or with vulnerable participants.

The masterclass is delivered as a mixture of interactive group tasks, plenary discussions, and lectures to enable active and experiential learning. It will probably be more suitable for early-careers researchers and mid-career researchers. There is no particular expectation regarding prior experience of and with qualitative research.

## How can the SRA help Early Career Researchers? (Platt)

The SRA is committed to supporting early career researchers, so please join us in this informal, small-groups session. We're interested in how you got started in your career, what you're doing, where your career is going, and how the SRA can help you. So it's a networking session where you can share experiences and ideas, connect to others, hear from more senior researchers, and talk about the kinds of support that would make a difference. More experienced researchers are also welcome, who have been involved in supporting early career researchers.

**Thanks to EBSCO for supporting this session.**



# Breakouts // PM

## Making the most of peer researchers (Council Chamber)

### Relational and Organisational? Navigating peer research methods at NatCen

**Duncan Grimes, NatCen and Paul Bragman, Community Regen**

We draw on recent work for a local authority, in partnership with a community based organisation, to understand the experiences of communities disproportionately impacted by Covid-19. Drawing on feedback from peer researchers involved as well as NatCen researchers we will present lessons learned for future design, delivery and outputs of incorporating methods like peer research into large scale research agendas.

### Empowered participation: lessons from conducting research into the lived experiences of displaced children and young people

**Ekaterina Aleynikova and Jasmin Rostron, National Institute of Economic and Social Research (NIESR), Amy Ashlee, Refugee Education UK (REUK), Aiya Abdallah, University of Sussex and Heidi Smith, ONS**

We will reflect on the use of participatory and peer research methods in an ongoing research project exploring the lived experiences of forcibly displaced children and young people in England. We also reflect on the challenges, including in recruitment and reaching a variety of groups of individuals. We will also consider the implications of the use of participatory research methods for the ethics and power relations of generating findings and knowledge through research.

## Researchers in residence (Platt)

### Researching in residence: opportunities for co-production, inclusion and empowerment

**Dr Isabelle Latham, Hallmark Care Homes**

This presentation will explore the potential and challenges of a unique Researcher-in-Residence role in the care home sector. Supporting individual care homes to identify, design and deliver their own action research projects, the researcher-in-residence role aims to involve, empower and ultimately co-produce research with staff, residents (including those living with dementia) and visitors.

### How do embedded researchers bridge the research-implementation gap in public health?

**Dr Rachael Edwards and Sarah Lester, University College London**

Embedded researchers are a valuable way to bridge the research-implementation gap. To identify lessons for researchers at the academic-policy interface, this presentation explores factors that enable and hinder embedded researchers in enhancing cultures of evidence use in local government public health settings. We focus on the initial stages of embedded researcher roles which revolve around establishing trusting local networks.

## Simplifying evaluation for complex problems? (Wolfson Theatre)

### Major projects, major impact: examining government impact evaluation designs

**Fay Sadro and Emily Power, Cabinet Office**

We know too little about the outcomes and impacts of government major projects. Driving improvements in evaluation lies at the core of the solution, but what does robust evaluation look like for large, highly complex projects?

### Essentialising Evaluation: is Perfect the Enemy of the Good?

**Professor David Parsons, P&A Research and Consulting**

The question is set against a legacy of usually sound methodology and applications in policy and programme evaluation but constrained use by decision makers. Why? This paper suggests evaluators need to look at rebalancing technical with political dimensions of evaluation practice with issues of proportionality and utility uppermost in rising to the challenge.

## Inclusive research from the start (Seligman Theatre)

### The Health Foundation's Inclusion Panel – our journey to embed inclusive practice in our work

**Hardeep Aiden, The Health Foundation with Sarah Rae and Amanda Rudczenko**

The Health Foundation's research team set up the Inclusion Panel so that people whose views and experiences are not considered enough in planning, delivering and supporting health and social care research have opportunities to influence these processes and the outcomes of the research.

### Using participatory methods to explore the lived experiences of underrepresented groups

**Dr Amber Jordan, Siannan Kerrigan and Alex Buckley, ONS**

Building on recommendations from the Inclusive Data Taskforce in 2021, the Centre for Equalities and Inclusion (CEI) qualitative team at the Office for National Statistics (ONS) undertook three research projects in 2022 using participatory approaches to better understand the lived experiences and issues affecting underrepresented groups. This research explored/examined the experiences of disabled adults, children with special educational needs and disabilities (SEND), and Gypsies and Travellers.

## Masterclass: An Infographic 101 (Linacre & Sloane)

**Lulu Pinney, freelance trainer, collaborator and designer**

Aimed at novices, this session will teach you how to create a simple infographic. Firstly, we will consider what an infographic is and what makes one 'good'. Then, working in groups and using pen and paper, you will be guided through the things you need to think about, and the corresponding steps you need to take, to sketch up an idea. You will then be shown how you can use readily available tools to turn your sketch into something you can publish. The session will finish with some advice on the most common pitfalls to avoid. All materials required will be provided in the session.

# Breakout presenters // AM

## Innovation for all: behavioural responses to new tech

**Clare Palmer** (Thinks Insight and Strategy) is an experienced mixed methodologies researcher specialising in using deliberative research to inform decision-making and policy development. She has combined this specialism with an interest in understanding perceptions of social infrastructure and the challenges related to encouraging behavioural shift in this space – particularly in relation to new technologies and decarbonisation initiatives in transport and utilities.

**Rebecca Posner** (Centre for Connected and Autonomous Vehicles) is an experienced behavioural psychologist specialised in understanding behaviour within transport, promoting modal shift and developing accurate mental models of transport technologies to ensure their safe use. She focuses on using innovative research methods and behavioural science to understand the needs and concerns of transport users and embedding principles of human-centred design into the development of future transport systems.

**Elizabeth Vourdas** is the Principal Researcher at Ofgem. She has over 15 years applied research experience spanning the public and charity sectors, including in the Cabinet Office and the Shelter. At Ofgem she helps ensure decision making is informed by a deep understanding of lived experiences by leading consumer research on a range of topics including affordability and net zero.

**Dr Michael Kattirtzi** is a Social Researcher at Ofgem. Michael has over 10 years of experience conducting and commissioning social research about energy regulation and policy. Prior to joining Ofgem, Michael was a postdoctoral researcher at the University of Edinburgh. At Ofgem, Michael leads on consumer research projects to ensure the consumer voice informs our work protecting consumers in the energy market.

**Nasrat Tania** has been a peer researcher at Toynbee Hall for five years, and was involved in the project with Ofgem on what it would mean to design a fairer transition to net zero. Nasrat brought her expertise to the project as someone with lived experience of being vulnerable to fuel poverty, including through facilitating workshops and co-designing solutions.

## How co-creation leads to solutions

**Kirstie Hewlett** is a Research Fellow at the Policy Institute, King's College London. She works across a wide range of social policy areas, with interests in inequalities, poverty, social division and communities, and the role of values, emotion, trust and identity in policy making.

**Zara Regan** is a Research Assistant at the Policy Institute, King's College London. She has over five years' experience of conducting research with a range of qualitative approaches on issues such as social inequality, community cohesion, political polarisation and distrust.

**Yamini Cinamon Nair** co-leads the GLA London Wellbeing and Sustainability Measure. She recently joined the Demography and Policy Analysis team within the GLA's City Intelligence Unit and prior to this worked in the London Mayor's Private Office. Yamini brings her experience working at the Bennett Institute for Public Policy coproducing a model of thriving with lived experts of financial hardship and working to develop a public assets accounting framework.

## Measure twice, estimate once

**Steven Ginnis** is a Research Director in Public Affairs, Ipsos UK. He has 14 years' experience as a mixed methods specialist, working with clients across central government, regulators and the third sector. He is responsible for driving innovation in research methods. This includes developing the application of new techniques such as social media analysis, digital ethnography, biometrics, text analytics and data science.

**Joseph Oxlade** is a Senior Research Manager at Ofcom, where he has worked for two years managing quant and qual research on telecoms, broadcasting and online safety – with a particular specialism in mixed method approaches. Previously he worked at a research agency, primarily using continuous panel data in the FMCG sector.

**Rachel Pinto** is a Principal Social Researcher at the Department for Transport, and heads up social research in the Aviation, Maritime and Borders Analysis team. She previously worked in research roles cover employment relations, skills and employment.

**Lexi Keegan** is a Senior Social Researcher at the Department of Transport, working in Aviation, Maritime, and Borders Analysis. She has 7 years social research experience, across both agencies and central Government in both qualitative and quantitative methods.

## Masterclass: sensitive topics and vulnerable participants in qualitative research

**Dr Nicole Brown** is Director of Social Research & Practice and Education Ltd. and Associate Professor at University College London. Nicole has taught research methods for over ten years, including at the American Association for Public Opinion Research (AAPOR), the Society for Research into Higher Education (SRHE), the National Centre for Research Methods (NCRM), Photovoice Worldwide and the British Medical Association (BMA).

## Early Careers session

**Jenni Brooks** and **Lee Chan** are SRA trustees, and **Lashanda Seaman** is qualitative research manager at Opinium.

# Breakout presenters // PM

## Making the most of peer researchers

**Duncan Grimes** is a Research Director in the CDR at NatCen, he is interested in how the public make sense of complex issues, and how research can help them become more involved in solutions.

**Paul Bragman** from Community Regen has 30 years' experience of community and economic development work in the voluntary, housing, and statutory sector in the UK and overseas. He has delivered several projects that involve recruiting, training, and paying residents and young people as peer/community researchers. The most recent project is engaging young people from Hackney as community researchers to better understand housing issues.

**Ekaterina Aleynikova** is a Senior Social Researcher at the National Institute of Economic and Social Research (NIESR). Her research interests are around inclusion in education and employment. Her work focuses on understanding the experiences of groups at risk of exclusion. She is a Principal Investigator on the project exploring the lived experiences of displaced young people and their families living in England.

**Amy Ashlee** is a Research Manager at Refugee Education UK. Amy specialises in participatory research with displaced children and young people and manages REUK's research portfolio comprising studies on education for refugee youth in the UK and around the world. Amy has more than six years' experience in research and policy for INGOs, UN agencies and university partners, and holds a master's in International Child Studies from King's College London.

**Jasmin Rostron** is an Associate Social Researcher at the National Institute of Economic and Social Research (NIESR). She is a qualitative researcher with interests in migration and health. She has worked on the research project exploring the lived experiences of displaced young people and their families, including conducting focus groups and in-depth interviews with young people and their parents, in English and Spanish, and working with and supervising peer researchers.

**Aiya Abdalla** is a final year undergraduate student at the University of Sussex studying Law with International Relations. She has worked as a peer researcher with REUK, NIESR and the ONS to produce social research exploring the lived experience of displaced young people living in England. On the project, she conducted in-depth interviews in Arabic, with young people and their parents.

## Researchers in residence

**Isabelle Latham** is Researcher-in-Residence for Hallmark Care Homes and honorary Senior Research Fellow at the Association for Dementia Studies (University of Worcester). She supports care homes to undertake research of importance to them and ensures evidence is translated into practice that positively impacts people's lives. Isabelle has 25 years' experience in care homes including research and education in dementia, safeguarding and learning for frontline staff.

**Rachael Edwards** obtained a PhD from the University of Waterloo, Canada, in 2021 and is now a Research Fellow in the Institute of Education at University College London. Her research focuses on two overarching themes: i) methods of translating research evidence into practice and ii) equity of access to nature for underrepresented communities.

**Sarah Lester** (University College London) is a researcher who works alongside stakeholders to produce evidence reviews to inform policy and practice. Previous work focuses on support for people affected by Adverse Childhood Experiences (ACEs) and victim-survivors of sexual violence. She is a final year PhD student exploring the relationship between research and public health decision-making to address health inequalities in local government.

## Simplifying evaluation for complex problems?

**Fay Sadro** is a Senior Evaluation Adviser in the Cabinet Office and HM Treasury Evaluation Task Force. She works with government departments to design and deliver high quality evaluation to support evidence informed policy and spending decisions. Fay brings over 12 years' experience of delivering evaluations, having worked for a range of academic institutions, voluntary and commercial research organisations.

**Emily Power** is a Senior Evaluation Adviser in the Evaluation Task Force. Emily joined the Civil Service in 2019 following several years building and leading the research and evaluation team at Cancer Research UK. Emily is a health psychologist by background and has also spent some time working in academia.

**Professor David Parsons** is an applied economist and evaluation specialist. A former advisor to the European Commission, National Economic Development Office and UK Commission for Employment and Skills, he has led approaching 60 independent evaluations, and advised on others, for many government departments, NDPBs and others. He is a member of the Cabinet Office Trials and Advice Panel.

## Inclusive research from the start

**Hardeep Aiden** joined the Health Foundation in April 2019 as Research Manager. Before joining the Health Foundation, Hardeep worked for the Equality and Human Rights Commission. Prior to this, he worked in research management for the British Red Cross, and the disability charity Scope.

**Sarah Rae** has always struggled with her mental health. She was a National Mind trustee for nine years during which time she Co-founded and Co-led the successful PROMISE restraint reduction programme at the Cambridgeshire and Peterborough NHS Foundation Trust. Sarah later initiated the MINDS Study (Coproducting improved mental health acute inpatient discharge using a Systems approach) and is now Co-Chief Investigator on the project.

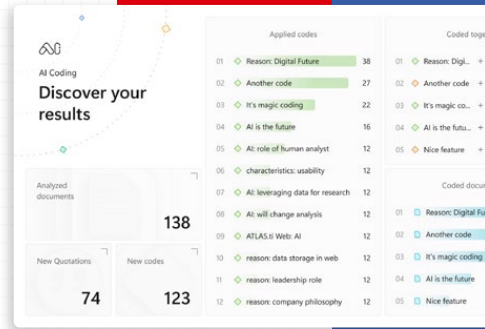
**Mandy Rudczenko** is a former mental health nurse and adult education tutor, and has been helping her son to manage his Cystic Fibrosis for the past 23 years. Over the past 10 years Mandy has become an active campaigner for the co-production of health and social care services, person-centred care, shared decision making, and self-management of long-term conditions.

**Amber Jordan** leads the qualitative research team within the centre for equalities and inclusion (CEI) at the ONS. The CEI exists to ensure the availability of data and evidence to better understand how underrepresented groups are impacted by social and policy issues. Amber has a PhD in Population Medicine; her research particularly focuses on understanding the experiences of children and young people at greater risk of disadvantage.

**Alex Buckley** and **Siannan Kerrigan** are senior research officers in the qualitative research team, have academic backgrounds in sociology, and their research focus is understanding the experiences of marginalised communities to feed into evidence for policy and practice.

## Masterclass: An Infographic 101

Lulu Pinney is a freelance trainer, collaborator and designer. Her work primarily focuses on getting practical know-how that relates to working with design, data and visuals into the hands of those working to improve our public and social worlds. Lulu's current practice is the result of a career that has seen her gain experience as a business analyst, graphic designer, visual journalist, data visualisation and infographic trainer, as well as a social researcher.



# AI Coding *Beta*: A Revolution in Qualitative Data Analysis

Introducing ATLAS.ti's AI Coding Beta, the world's first AI solution that revolutionizes qualitative data analysis, powered by OpenAI. Transform the way you work with data: Say goodbye to time-consuming tasks and hello to fast, efficient insights.



### EFFICIENCY AND CONTROL

Reduce your coding time by up to 90%. AI Coding provides fully automated code proposals, taking the grunt work out of your hands. Focus on refinement and analysis for optimized scientific accuracy while maintaining full control.



### ATLAS.ti & OPENAI

Experience efficient data coding like never before. We're pioneering the future of data analysis by integrating OpenAI's GPT model, known for human-like language comprehension.



### FEATURES & BENEFITS

- Unprecedented data analysis speed
- Relief from tedious manual coding
- Precise results powered by OpenAI
- Easily refine codes and quotations
- Discover otherwise hidden insights
- Focus on interpreting, not laboring

## SPECIAL SRA CONFERENCE DISCOUNT

Join the data analytics revolution today and save 20% on all ATLAS.ti products in our shop with coupon code: SRA20

[▶ Get the SRA deal](#)

# Visit the 'Please Do Touch' research exhibition (Osler & Long Room)

Celebrating the return of our in-person conference, exhibits will be a mixture of tangible and touchable pieces, rooted in research that may speak to any part of the research process including design, methods, results, outputs, and researcher experience.

This exhibition is divided into the following zones:

- ▶ Multi-sensory area (A-F)
- ▶ Reading corner (G-L)
- ▶ Play zone (M-S)
- ▶ Art and craft club (T-Z)

With over 25 exhibits pieces will include textiles, promotional stationery, booklets, comics, paintings, collages, interactive posters and more.

The exhibitors have diverse backgrounds and work across all sectors including academia, central and local government departments, research agencies, independent researchers and community network organisations. Some researchers have created their own pieces whilst others have collaborated with established artists.

With thanks to Jen Jones who has led this addition to the conference, once again.

## Multi-sensory area

### Overcoming the web of conducting insider research (A)

Lauren Lucas is a Stroke Association funded PhD student researching therapeutic relationships and self-management in community stroke rehabilitation. She is a Physiotherapist with 13 years of clinical experience, 8 of which have been in community neurological rehabilitation. Lauren is undertaking her PhD at the University of Manchester supervised by Prof Audrey Bowen, Prof Sarah Peters and Dr Sarah Cotterill.

### Critical Care Futures (B)

Dr Catherine Montgomery is a sociologist of science and medicine at the University of Edinburgh. Her research focuses on ways of knowing in healthcare, with a particular interest in the intersection between data practices, care and learning.

### My Blue Health Rockpool (C)

Kath Maguire is an accidental academic. A role as patient/carer advisor to the National Institute for Health Research (NIHR) proved a slippery slope into a career engaging with communities and service users to identify information needs and connect them with research teams, sharing learning in both directions.

### Patience the transforming doll (D)

Victoria Christodoulides is an SWDTP scholarship PhD student within the Health Department at the University of Bath. Victoria's project focuses on co-exploring how childhood trauma recovery literacies impact understanding and practising of recovery beyond the biomedical. Using co-constructive Participatory Action arts based approaches, Victoria explored how informal public pedagogical spaces can support this extension.

### Walk in my shoes (E)

Nicole Brown is a writer, social researcher, and associate professor working on the cusp of research/practice/teaching. Her creative work has been published in the *Journal of Participatory Research Methods*, *So Fi Zine*, and *The AutoEthnographer*. Her

books include *Making the Most of Your Research Journal* and *Embodied Inquiry: Research Methods*. Her book *Photovoice, Reimagined* will be published in November 2023.

### Sacred Stories (F)

Fay Blyth is Headteacher of the Virtual School in the London Borough of Waltham Forest, and an MRes student at the UCL Institute of Education. The Virtual School works with children in care to ensure that they reach their potential. The work was co-produced with artist Angela Groundwater and a group of young people in the care of Waltham Forest.

## Reading corner

### Sharing complex research findings with refugee research participants (G)

Andy McKeown is a Research Manager in the Qualitative Research and Engagement Centre at Ipsos and a keen advocate of conducting inclusive research. He is experienced in producing research that gives people a platform to have their voices heard across policy areas including refugee resettlement, housing and health and social care.

### HOLLOWAY (H)

Carly Guest is Assistant Professor in Sociology at Northumbria University. She has 10 years' experience of research and teaching in Higher Education. Carly's work is concerned with the personal and intimate narratives and memories of political movement, moments and institutions, and with the experience and application of critical, creative and autobiographical pedagogies. Carly utilizes creative, narrative methodologies and feminist and critical pedagogies in her research and teaching practice and has conducted a number of public and creative workshops using collage, photo-analysis and memory-work.

Rachel Seoighe is a Senior Lecturer in Criminology at the University of Kent. Her work is grounded in decarceral feminist analysis of the prison estate, particularly the closure of Holloway Prison, creative methods, and state violence and resistance. She has experience in organising community exhibitions – for example the 'Tamils of Lanka: a Timeless Heritage' (2019), where she also carried out participatory research on the process, reflecting on the exhibition as a form of memory activism and resistance.

### The History and Histography of Muslims in the British Education System (I)

Maryam Bham is a first-year Education PhD student at the University of Cambridge. She has worked in the field of Education for the past 16 years and holds a Qualified Teacher Status. Her research explores the personal and professional identities of British Muslim Primary teachers. She is an honorary scholar at the Woolf Institute. She is interested in interculturality and inclusion in education.

### Identifying Protective and Risk Behaviour Patterns of Online Communication in Young People (J)

Rebecca Anthony is a research associate for the Wolfson Centre for Young People's Mental Health at Cardiff University. She is particularly interested in the mental health and wellbeing of children and young people with experience of being in care. Her PhD thesis was on the mental wellbeing of adoptive families.

## Artistic representations of community voices on Covid-19 vaccine confidence (K)

Shoba Poduval is a Clinical Lecturer at the Department of Primary Care & Population Health at University College London. Shoba's research involves exploring and addressing ethnic health inequalities through mixed methods, including qualitative interviewing and participatory designs. In 2021-2022 Shoba led a qualitative study of the perspectives of ethnic minority communities in London on Covid-19 vaccination, which informs this work.

## Conversation With A Purpose (L)

Helen Kara has been an independent researcher since 1999 and an independent scholar since 2011. She specialises in creative research methods and research ethics, and has written several books and comics on these topics.

## Play zone

### Technicians in Research Teams (M)

Catrin Harris is a Research Fellow, with a particular focus on qualitative methods, for the Midlands Innovation TALENT programme, which seeks to raise the status and opportunities for technicians in higher education and research. Recently she has led a project exploring technicians' perspectives of, and experiences in the research community. The report *Research Culture: A Technician Lens*, was published in September 2022.

### Researching a life: evidence, case studies, and subjectivity (N)

Kate Mahoney is Research Manager at Healthwatch Essex and a Community Fellow at the University of Essex. Kate and her team produce research that champions the lived experiences of Essex residents to improve health and social care. Kate's research explores women's history and activism. Her next book *Feminist Mental Health Activism in England, c. 1968-1995* will be published in 2024.

### Journeyscape or Journeybreak? (O)

Janet C. Bowstead has a professional background in frontline, policy, and coordination work on violence against women. Her academic research is interdisciplinary in nature, across geography, social policy and sociology; integrating quantitative, spatial, qualitative and creative participatory methods. Her research draws on theory, concepts and analysis techniques from migration research and applies them to the internal migration journeys of women within the UK escaping domestic violence (<https://www.womensjourneyscapes.net/>).

### The IVF Experience (P)

Josie Hamper is a social scientist with an interest in employing innovative qualitative methods to explore questions around health, medicine, the body and technology. Her publications consider the social and cultural implications of new health-related technologies and how these become incorporated into people's everyday lives and relationships.

### Walking the tightrope: a prototype game that invites the rehabilitation of success (Q)

Sally Sharp is a PhD student with a professional background in primary education. She currently works in higher education teaching across education and social sciences. Her research interests are wellbeing, education and inclusion. She uses qualitative methods to explore ways people make sense of their experiences. Her current research uses narrative inquiry to listen to stories of PhD students' wellbeing.

### When Lego Speaks (R)

Dr Victoria Young is a research scientist at King's College London, where she investigates sociotechnical interactions across autonomous systems. Her work focuses on aspects of trust: trust by users of autonomous systems, trust in their reliability to perform as expected, and ways of evaluating human-AI system performance. The scope of her current work includes robotics, autonomous vehicles, mobile phone apps and other AI applications.

## Hope in places that you haven't been (S)

Dr Nicola Simpson is a Research Fellow at Norwich University of the Arts developing practice-led creative research methodologies and arts-based impact and evaluation toolkits. My current research is focused on the collaboration between NUA, the arts and mental health charity Hospital Rooms, lived experience experts and the coproduction of innovative, creative and insightful research and evaluation methodologies that explore the experience of being in secure mental health environments and the impacts that ambitious arts interventions can make on health and wellbeing in these clinical spaces.

## Arts and craft club

### Printed promotion materials for participant recruitment in mental health research (T)

Zaisheng Wang is a third-year PhD candidate from China, researching at the Mental Health Research Unit in the School of Health and Related Research (ScHARR) of the University of Sheffield. Currently, she studies mental health services use in a cross-culture context through a qualitative study among Chinese international students in UK higher education.

### Improving response with the 'squish factor' (U)

Anita Arif is a Senior Research Officer at the ONS working in the research and design team focusing on respondent materials of our Transformed Labour market Survey.

### Redesigning Social Survey materials to optimise space and usability (V)

Steffi Giji is a Research Officer from the Office for National Statistics (ONS). She currently works in the Behavioural Insights and Data Collection Research team, focusing on maximising Behavioural Insights across ONS and leading on a project to redesign social survey invite letters to best optimise space and layout to meet user needs.

### 'Through the keyhole' – representing adapted workspaces from emergency remote teaching and learning (W)

Nicola Douglas-Smith is a lecturer in psychology at the University of the West of Scotland. Nicola's research interests lie within health and work environments and how these impact overall well-being and life experience. Nicola has a passion for creative methods and is keen to develop her knowledge and experience of creative methods in data collection and dissemination.

### Hey-Ho Let's Go! Are you Sure I am Happy? (X)

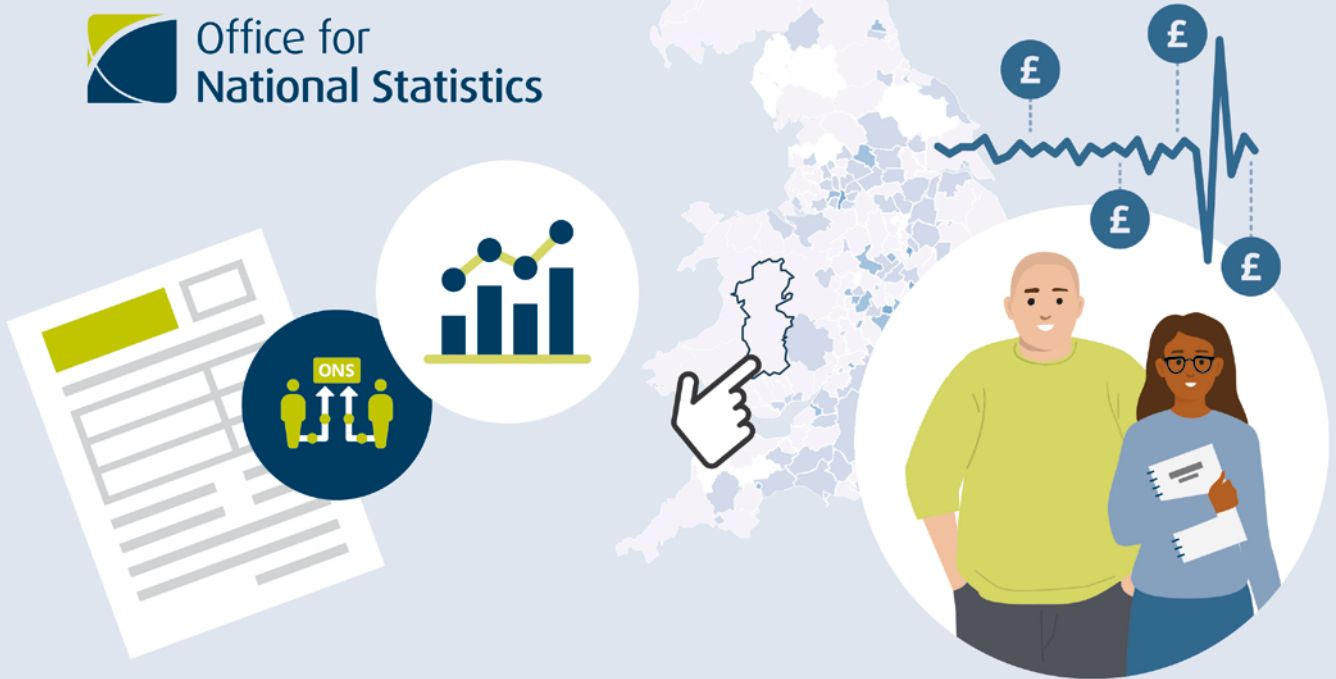
Maria Federica Moscati is a Reader in Law and Society at the University of Sussex. She is co-director of the Centre for Cultures of Reproduction, Technologies, and Health. Her research interests include children's rights, dispute resolution, LGBTIQ+ rights, family law and reproductive rights.

### This is not Art (Y)

Dr Richy Cook is an ethnomethodologist and ethnographer interested in how people engage and interact with 'things'. These things may range from digital technologies, everyday objects or surfaces.

### An artist's analysis of girls' affective capabilities to reconfigure modes of feminisms (Z)

Abigail Wells is a part-time PhD student who has an interest in posthuman research methodologies and creative methods. She is an active teacher, artist and researcher. Prior to her academic endeavours, Abigail founded and managed a street art gallery in London for emerging artists. After this role, she completed her teacher training and Masters in Education at Goldsmiths.



# Do you use census and population statistics?

Take part in our **consultation** this summer and **share your views** to shape the future of population, migration and social statistics.

We are researching new ways to deliver more frequent and higher-quality statistics and we need your help to ensure our proposal meets your and society's needs.

Scan the QR code to learn how you can stay up to date with the latest consultation news.



# SRA training in research methods

All our courses are run online using Zoom unless otherwise stated. In person courses are currently being held in London or Edinburgh.

New dates and courses are being added all the time so please visit [www.the-sra.org.uk/training](http://www.the-sra.org.uk/training) for up-to-date information.

If you have any training course queries please contact [lindsay.adams@the-sra.org.uk](mailto:lindsay.adams@the-sra.org.uk)

The costs to attend our courses are:

## ONLINE

SRA members: 1 day or 2 part days – £165.00;

2 days or 3 part days – £330.00

Non members: 1 day or 2 part days – £220.00;

2 days or 3 part days – £440.00

## IN PERSON

SRA members: £202.50; Non members: £270.00

## EVALUATION COURSES

**28 June:** Theory-based Evaluation: options and choices, with Professor David Parsons

**29 June:** Research and evaluation project management, with Sally Cupitt

**14 September** (IN PERSON, IN EDINBURGH): Impact evaluation (advanced), with Professor David Parsons

**15 September** (IN PERSON, IN EDINBURGH): Building a theory of change, with Professor David Parsons

**20 September:** Foundations of evaluation, with Sally Cupitt

**28 September:** Research and evaluation project management, with Sally Cupitt

**4 October:** Impact evaluation (advanced), with Professor David Parsons

## QUALITATIVE COURSES

**3 & 4 July** (2 afternoons): Creative data analysis, with Dr Nicole Brown

**5 July** (IN PERSON, IN LONDON): Qualitative interviewing, with Professor Karen O'Reilly

**6 July** (IN PERSON, IN LONDON): Interpreting and writing up your qualitative findings, with Professor Karen O'Reilly

**7 July:** Narratives and storytelling in qualitative research, with Dr Karen Lumsden

**11 July:** Writing up qualitative data, with Dr Karen Lumsden

**14 July:** Qualitative data analysis, with Professor Karen O'Reilly

**22 August:** Foundations of qualitative research, with Dr Karen Lumsden

**24 August:** Conducting online focus groups, with Dr Karen Lumsden

**25 August:** Introduction to qualitative interviewing, with Dr Karen Lumsden

**12 to 14 September** (3 part days): Designing and moderating focus groups, with National Centre for Social Research

**14 & 15 September:** Positional and reflexivity in qualitative research, with Dr Nicole Brown

**22 September:** Narrative analysis, with Dr Karen Lumsden

**28 & 29 September** (2 full days): Depth interviewing skills, with National Centre for Social Research

**5 & 6 October** (2 half days): Creative methods in qualitative research, with Dr Nicole Brown

**6 October:** Digital qualitative interviewing, with Dr Karen Lumsden

**9 & 10 October** (2 part days): Managing challenging interviews, with National Centre for Social Research

**11 October** (IN PERSON, IN LONDON): Conducting focus groups, with Professor Karen O'Reilly

**12 October** (IN PERSON, IN LONDON): Qualitative interviewing, with Professor Karen O'Reilly

**13 October** (IN PERSON, IN LONDON): Qualitative data analysis, with Professor Karen O'Reilly

**26 & 27 October** (2 mornings): Introduction to qualitative research, with National Centre for Social Research

**2 November:** Reporting qualitative data, with National Centre for Social Research

**13 to 15 November** (3 part days): Analysis of qualitative data, with National Centre for Social Research

**15 November** (IN PERSON, IN LONDON): Introduction to ethnographic methods, with Professor Karen O'Reilly

**16 November** (IN PERSON, IN LONDON): Qualitative data analysis, with Professor Karen O'Reilly

**17 November** (IN PERSON, IN LONDON): Interpreting and writing up your qualitative findings, with Professor Karen O'Reilly

## QUANTITATIVE COURSES

**20 to 22 June** (3 afternoons): Correlation, linear and logistic regression with R, with Dr Pamela Campanelli

**27 & 28 June** (2 afternoons): Web survey design, with Dr Pamela Campanelli

**5 & 6 July** (2 afternoons): Questionnaire design, with Dr Pamela Campanelli

**12 July:** Understanding statistical concepts and essential tests, with Dr Valerija Kolbas

**12 & 13 September** (2 afternoons): Imputation and weighting, with Dr Pamela Campanelli

**15 September:** Data management and visualisation using R, with Dr Alexandru Cernat

**20 & 21 September** (2 mornings): Cognitive interviewing, with National Centre for Social Research

**24 to 26 October** (3 afternoons): Advanced questionnaire design, with Dr Pamela Campanelli

## OTHER RESEARCH SKILLS

**12 July** (IN PERSON, IN LONDON): Graphic design know-how for social researchers, with Lulu Pinney

**14 July:** Introduction to ethnographic methods, with Professor Karen O'Reilly

**11 September:** Data Visualisation and infographic design, with Nigel Hawtin

**27 & 28 September** (2 mornings): Research with children and young people, with Berni Graham

**20 October:** Introduction to participatory action research, with Dr Karen Lumsden

**23 October:** Introduction to mixed methods research, with Drs Sarah Jasmin and Ruth Plackett

**10 November:** Writing effective research reports, with Professor Simon Haslam

**20 November:** Consultancy skills for social researchers, with Professor Simon Haslam